

## ORIGINAL ARTICLE

# Extending Aromatase-Inhibitor Adjuvant Therapy to 10 Years

P.E. Goss, J.N. Ingle, K.I. Pritchard, N.J. Robert, H. Muss, J. Gralow, K. Gelmon, T. Whelan, K. Strasser-Weippl, S. Rubin, K. Sturtz, A.C. Wolff, E. Winer, C. Hudis, A. Stopeck, J.T. Beck, J.S. Kaur, K. Whelan, D. Tu, and W.R. Parulekar

## ABSTRACT

**BACKGROUND**

Treatment with an aromatase inhibitor for 5 years as up-front monotherapy or after tamoxifen therapy is the treatment of choice for hormone-receptor–positive early breast cancer in postmenopausal women. Extending treatment with an aromatase inhibitor to 10 years may further reduce the risk of breast-cancer recurrence.

**METHODS**

We conducted a double-blind, placebo-controlled trial to assess the effect of the extended use of letrozole for an additional 5 years. Our primary end point was disease-free survival.

**RESULTS**

We enrolled 1918 women. After a median follow-up of 6.3 years, there were 165 events involving disease recurrence or the occurrence of contralateral breast cancer (67 with letrozole and 98 with placebo) and 200 deaths (100 in each group). The 5-year disease-free survival rate was 95% (95% confidence interval [CI], 93 to 96) with letrozole and 91% (95% CI; 89 to 93) with placebo (hazard ratio for disease recurrence or the occurrence of contralateral breast cancer, 0.66;  $P=0.01$  by a two-sided log-rank test stratified according to nodal status, prior adjuvant chemotherapy, the interval from the last dose of aromatase-inhibitor therapy, and the duration of treatment with tamoxifen). The rate of 5-year overall survival was 93% (95% CI, 92 to 95) with letrozole and 94% (95% CI, 92 to 95) with placebo (hazard ratio, 0.97;  $P=0.83$ ). The annual incidence rate of contralateral breast cancer in the letrozole group was 0.21% (95% CI, 0.10 to 0.32), and the rate in the placebo group was 0.49% (95% CI, 0.32 to 0.67) (hazard ratio, 0.42;  $P=0.007$ ). Bone-related toxic effects occurred more frequently among patients receiving letrozole than among those receiving placebo, including a higher incidence of bone pain, bone fractures, and new-onset osteoporosis. No significant differences between letrozole and placebo were observed in scores on most subscales measuring quality of life.

**CONCLUSIONS**

The extension of treatment with an adjuvant aromatase inhibitor to 10 years resulted in significantly higher rates of disease-free survival and a lower incidence of contralateral breast cancer than those with placebo, but the rate of overall survival was not higher with the aromatase inhibitor than with placebo. (Funded by the Canadian Cancer Society and others; ClinicalTrials.gov numbers, NCT00003140 and NCT00754845.)

The authors' full names, academic degrees, and affiliations are listed in the Appendix. Address reprint requests to Dr. Goss at the Avon International Breast Cancer Research Program, Massachusetts General Hospital Cancer Center, 55 Fruit St., LRH-302, Boston, MA 02114, or at [pgoss@mgh.harvard.edu](mailto:pgoss@mgh.harvard.edu).

This article was published on June 5, 2016, and updated on June 23, 2016, at [NEJM.org](http://NEJM.org).

DOI: 10.1056/NEJMoa1604700

Copyright © 2016 Massachusetts Medical Society.

**T**HE RISK OF RECURRENCE OF HORMONE-receptor-positive early breast cancer continues indefinitely.<sup>1</sup> Long-term reduction in the risk of recurrence has been achieved with the antiestrogen agent tamoxifen, aromatase inhibitors, or a combination of the two. These treatments are administered in a variety of adjuvant regimens, including tamoxifen for 10 years, tamoxifen for up to 5 years followed by an aromatase inhibitor for 5 years, or an initial aromatase inhibitor for 5 years.<sup>2-4</sup> Extrapolating from these results, many patients have chosen to continue taking an aromatase inhibitor for more than 5 years (if they do not have unacceptable side effects), despite the lack of specific data on its value and pending the results of clinical trials. The MA.17R trial was a North American Breast Cancer Group trial that was coordinated by the Canadian Cancer Trials Group. The trial examined the effects of treatment with an aromatase inhibitor for 10 years rather than just 5 years after any duration of prior treatment with tamoxifen.

## METHODS

### STUDY DESIGN AND PARTICIPANTS

The MA.17R trial was a phase 3, randomized, double-blind, placebo-controlled trial involving postmenopausal women with primary breast cancer who had received 4.5 to 6 years of adjuvant therapy with an aromatase inhibitor, preceded in most patients by treatment with tamoxifen. Within 2 years after completing treatment with the aromatase inhibitor, patients were randomly assigned<sup>5</sup> to receive 2.5 mg of letrozole or placebo orally once a day for another 5 years. Participants were stratified according to lymph-node status, prior receipt of adjuvant chemotherapy, the interval between the last dose of aromatase inhibitor and randomization, and the duration of prior receipt of tamoxifen. Women were eligible to participate in the trial if they were disease-free after having completed 4.5 to 6 years of therapy with any aromatase inhibitor. Further eligibility criteria at enrollment included hormone-receptor positivity in the primary tumor (unknown hormone-receptor status was permitted only for patients who had participated in the MA.17 trial), performance status of less than 3 on the Eastern Cooperative Oncology Group scale (a 5-point scale on which higher scores indicate more disease-

related disability), and a minimum life expectancy of at least 5 years. Exclusion on the basis of age alone was not permitted.

### OVERSIGHT

The institutional review board at each participating institution approved the protocol, which is available with the full text of this article at NEJM.org. All patients provided written informed consent. The trial drug, letrozole, and funding support were provided by Novartis. The Canadian Cancer Trials Group was responsible for the design of the study, the development of the protocol, and the collection and maintenance of the data. All the authors, with assistance from the staff at the central office of the Canadian Cancer Trials Group, contributed to the writing of the manuscript and to the decision to submit the manuscript for publication and vouch for the accuracy and completeness of the data reported and adherence to the protocol. Novartis reviewed the protocol and all amendments before these documents were submitted to regulatory agencies and research ethics boards. Novartis did not contribute to the accrual, analysis, or interpretation of the data or to the writing of the manuscript. No one who is not an author contributed to the manuscript.

### ASSESSMENTS

Clinical evaluations, which were performed annually, included assessments of new bone fracture and new-onset osteoporosis, routine blood work, mammography, and assessment of toxic effects. Subsequent new diagnoses were reported at follow-up visits. Bone mineral density was measured by means of dual-energy x-ray absorptiometry, and scans were obtained within 12 months after study entry, every 2 years thereafter, and at the completion of treatment. Treatment was discontinued if there was a serious intercurrent illness, unacceptable toxic effects, or disease recurrence or if requested by the patient. Adherence to study procedures was confirmed during all follow-up visits if a participant answered “yes” when asked if she had “been taking the study medication by mouth once per day.” Adverse events were assessed with the use of the National Cancer Institute Common Toxicity Criteria, version 2.0, and quality of life with the use of the Medical Outcomes Study 36-Item Short-Form Health Survey (SF-36) and the Menopause-Specific

Quality of Life (MENQOL) questionnaire at baseline and at 12, 24, 36, 48 and 60 months.<sup>6,7</sup> Interim safety analyses were reviewed twice yearly by the independent data and safety monitoring committee of the Canadian Cancer Trials Group. The quality-of-life analysis involved between-group comparisons of the change in scores from baseline on the SF-36 physical and mental component summary scores and its eight subscales (physical functioning, role–physical, bodily pain, general health, vitality, social functioning, role–emotional, and mental health) and on the four MENQOL symptom subscales (vasomotor, psychosocial, physical, and sexual). SF-36 scores range from 0 to 100, with higher scores indicating better quality of life, and MENQOL scores range from 1 to 8, with higher scores indicating more bothersome symptoms. The minimum clinically important difference for SF-36 and MENQOL scores is 5 and 0.5, respectively.<sup>8,9</sup> (See Section S1 in the Supplementary Appendix, available at NEJM.org, for the methods used to perform the analyses.) Women with at least one assessment were included in the quality-of-life analyses.

#### TRIAL END POINTS

The primary end point was disease-free survival, which was defined as the time from randomization to recurrence of breast cancer (in the breast or chest wall or at nodal or metastatic sites) or the development of a new primary breast cancer. The occurrence of a second type of cancer or death without breast cancer recurrence were not included as events in the analysis of disease-free survival; data for patients who died without breast cancer recurrence were censored at the date of death. Secondary end points included overall survival, the incidence of contralateral breast cancer, quality of life, and long-term safety.

#### STATISTICAL ANALYSIS

On the basis of the 43% lower hazard of recurrence found with letrozole as compared with placebo in the preceding MA.17 trial,<sup>10</sup> we hypothesized that a 33% lower hazard of recurrence with letrozole as compared with placebo would be seen in the MA.17R trial. We calculated that for the study to have 80% power, at a two-sided 0.05 level, to detect this improvement, 196 events would need to be observed, and we estimated that the target enrollment for that number of events would be 1800 patients. On the basis of

the estimate of disease-free survival of 89% at 5 years in the placebo group, it was projected that 196 events would be observed after patients were followed for 4 years. At the 6-year point, by June 4, 2015, only 176 events had been observed and, on the basis of the relatively small loss in the power of the study, a continued decline in the event rate, and limitations in resources, the trial design was amended, with the primary analysis becoming time-based rather than event-based. These changes were approved by the data and safety monitoring committee, the institutional review boards of the participating institutions, and other regulatory bodies. The final database, which was locked on November 13, 2015, had 165 events (cleaned data), providing 80% power to detect a hazard ratio of 0.655 for disease-free survival.

Analyses of pretreatment characteristics and efficacy end points were based on data from all patients who underwent randomization. Analyses of safety and the effects of exposure to the study medication included all participants who received at least one dose of the trial medication. A log-rank test with adjustment for stratification factors performed at the time of randomization was the primary method that we used for the analysis of time-to-event outcomes; binary outcomes were assessed with the use of Fisher's exact test, and continuous outcomes with the use of the Wilcoxon test. All comparisons between the two groups were made with the use of a two-sided test at an alpha level of 5%, unless otherwise specified. No adjustments were made for multiplicity of inferences for multiple clinical end points.

We report results for the primary outcomes and selected secondary outcomes. Other secondary outcomes are listed in the protocol.

## RESULTS

#### STUDY POPULATION AND DURATION OF TREATMENT

The target enrollment was reached on May 8, 2009, which was 4.5 years after randomization began. A total of 1918 patients were randomly assigned to receive letrozole (959 patients) or placebo (959 patients) (see Fig. S1 in the Supplementary Appendix). Randomization with stratification was used to ensure that the treatment groups were well balanced at baseline (Table 1). The rate of adherence to the study regimen was

<b>Table 1. Baseline Characteristics.*</b>			
<b>Characteristic</b>	<b>Letrozole (N=959)</b>	<b>Placebo (N=959)</b>	<b>Total (N=1918)</b>
Age — yr†			
Median	65.6	64.8	65.1
Interquartile range	60.3–72.0	59.6–71.1	60.0–71.5
Time from first diagnosis of breast cancer — yr			
Median	10.6	10.6	10.6
Interquartile range	7.5–11.5	7.8–11.6	7.6–11.5
Tumor stage at diagnosis — no. (%)‡			
T1–T2	865 (90.2)	870 (90.7)	1735 (90.5)
T3–T4	87 (9.1)	79 (8.2)	166 (8.7)
TX	7 (0.7)	10 (1.0)	17 (0.9)
Nodal stage of disease at diagnosis — no. (%)§			
N0	446 (46.5)	448 (46.7)	894 (46.6)
N1	456 (47.5)	455 (47.4)	911 (47.5)
N2–N3	36 (3.8)	39 (4.0)	75 (3.9)
NX	21 (2.2)	17 (1.8)	38 (2.0)
Hormone-receptor status: estrogen, progesterone, or both — no. (%)			
Positive	945 (98.5)	950 (99.1)	1895 (98.8)
Negative	3 (0.3)	2 (0.2)	5 (0.3)
Unknown or missing	11 (1.1)	7 (0.7)	18 (0.9)
Treatment with tamoxifen — yr			
Median	5.0	5.0	5.0
Interquartile range	2.0–5.0	2.0–5.0	2.0–5.0
Duration of tamoxifen therapy — no. (%)			
0 yr	199 (20.8)	198 (20.6)	397 (20.7)
>0 to <2 yr	40 (4.2)	40 (4.2)	80 (4.2)
2 to <4.5 yr	43 (4.5)	29 (3.0)	72 (3.8)
4.5 to 6 yr	670 (69.9)	684 (71.3)	1354 (70.6)
>6 yr	7 (0.7)	8 (0.8)	15 (0.8)
Duration of previous aromatase-inhibitor therapy¶			
Median (interquartile range) — yr	5.0 (5.0–5.1)	5.0 (5.0–5.1)	5.0 (5.0–5.1)
Distribution — no. (%)			
<4.5 yr	3 (0.3)	2 (0.2)	5 (0.3)
4.5–6 yr	949 (99.0)	950 (99.1)	1899 (99.0)
>6 yr	7 (0.7)	6 (0.6)	13 (0.7)
Data missing	0	1 (0.1)	1 (0.1)

\* There were no significant differences between the groups in baseline characteristics, except as noted.

†  $P < 0.05$  for the comparison between treatment groups at baseline.

‡ T1–T2 indicates that the tumor is  $\leq 50$  mm in its greatest dimension, T3–T4 that the tumor is  $> 50$  mm in its greatest dimension, and TX that the size of the tumor cannot be assessed.

§ N0 indicates that there were no regional metastases to lymph nodes, N1 indicates nodal stage metastases, N2–N3 indicates advanced nodal stage metastases, and NX indicates that regional lymph nodes could not be assessed.

¶ Very few patients continued to take their original aromatase inhibitor after randomization.

62.5% among the patients receiving letrozole and 62.3% among those receiving placebo.

The median time between the initial diagnosis of breast cancer and randomization was 10.6 years (interquartile range, 7.6 to 11.5). The median duration of prior treatment with tamoxifen was 5 years, with 68.5% of patients having received tamoxifen for 4.5 to 5.5 years and 20.7% having received no tamoxifen. The median duration of prior treatment with an aromatase inhibitor was 5 years, with 95.4% having received 4.5 to 5.5 years of treatment. Almost all patients (99.5%) had been without continuous breaks of longer than 6 months while taking their prior aromatase inhibitor. The median interval between the last dose of aromatase inhibitor and randomization was less than 6 months for 90% of participants, and the median duration of the study regimen was 5 years (mean, 4.3 years). Median follow-up was 75 months (6.3 years).

#### EFFICACY END POINTS

A total of 165 participants had an event involving disease recurrence or the occurrence of contralateral breast cancer (67 in the letrozole group and 98 in the placebo group). Among these patients, 55 in the letrozole group and 68 in the placebo group had recurrent breast cancer, and 13 and 31, respectively, had contralateral breast cancer (Table 2). The Kaplan–Meier curves for disease-free survival are shown in Figure 1A. The rate of 5-year disease-free survival was 95% (95% confidence interval [CI], 93 to 96) in the letrozole group and 91% (95% CI, 89 to 93) in the placebo group. The hazard ratio involving disease recurrence or the occurrence of contralateral breast cancer with letrozole versus placebo was 0.66 (95% CI, 0.48 to 0.91;  $P=0.01$ ).

A prespecified sensitivity analysis of disease-free survival that included all deaths from breast cancer as events yielded the same results as the primary analysis because all patients who died

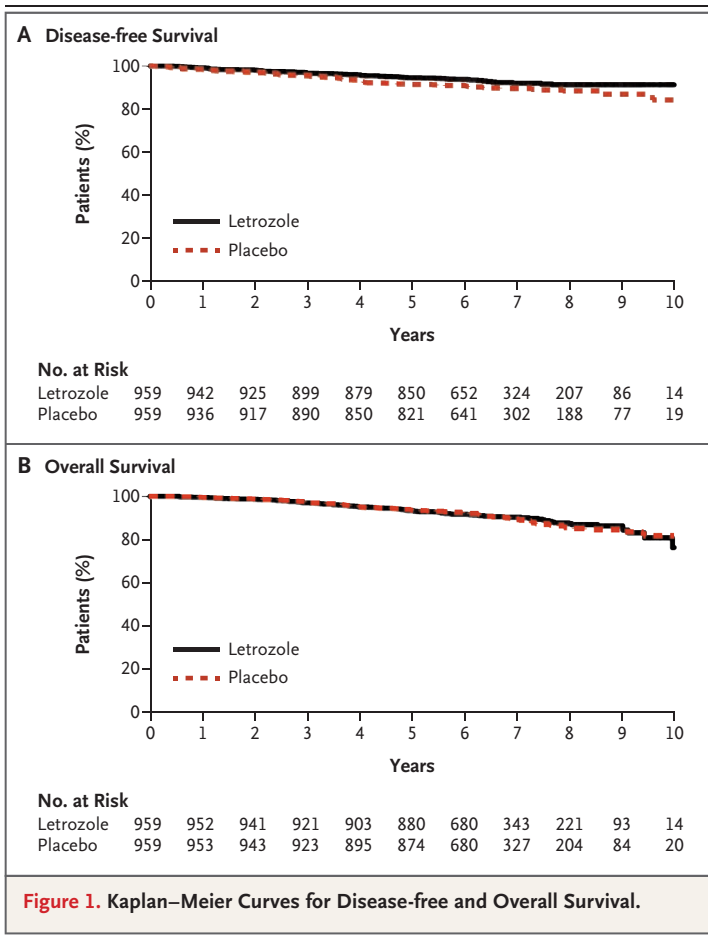
**Table 2. Recurrence of Breast Cancer or Occurrence of Contralateral Breast Cancer.**

Variable	Letrozole (N=959)	Placebo (N=959)
	number (percent)	
Patients with a recurrence of the primary cancer or with contralateral breast cancer	67 (7.0)	98 (10.2)
Recurrence*†	55 (5.7)	68 (7.1)
Local breast	8 (0.8)	10 (1.0)
Local chest wall	6 (0.6)	7 (0.7)
Regional	5 (0.5)	13 (1.4)
Distant	42 (4.4)	53 (5.5)
Ascites	1 (0.1)	4 (0.4)
Bone	28 (2.9)	37 (3.9)
Brain	3 (0.3)	2 (0.2)
Liver	11 (1.1)	12 (1.3)
Lung	14 (1.5)	14 (1.5)
Bone marrow	1 (0.1)	2 (0.2)
Omentum	1 (0.1)	0
Peritoneum	1 (0.1)	0
Pleural effusion	5 (0.5)	4 (0.4)
Pleura	1 (0.1)	2 (0.2)
Other	8 (0.8)	12 (1.3)
Contralateral breast cancer†	13 (1.4)	31 (3.2)

\* Patients may have had more than one site of recurrence.

† One patient in each group had both local recurrence and contralateral breast cancer.





of breast cancer also had recurrence before or at the time of their death. A post hoc sensitivity analysis of disease-free survival that included all deaths as events showed a rate of 5-year disease-free survival of 90% (95% CI, 88 to 92) with letrozole versus 88% (95% CI, 86 to 90) with placebo. The hazard ratio for disease recurrence, the occurrence of contralateral breast cancer, or death with letrozole as compared with placebo was 0.80 (95% CI, 0.63 to 1.01;  $P=0.06$ ); in a multivariate analysis that was adjusted for stratification factors and the duration of aromatase-inhibitor therapy received before the trial, the hazard ratio was 0.79 (95% CI, 0.63 to 1.00;  $P=0.05$ ).

The effect of letrozole on disease-free survival was also explored in subgroups defined according to each stratification factor and according to the duration of prior treatment with an aromatase inhibitor; all the subgroups were prespecified in the analysis plan. The superior effect of letrozole was observed in all subgroups, and no

significant interactions were observed, indicating a homogeneity of treatment effect across all subgroups (Fig. S2 in the Supplementary Appendix).

A total of 200 participants had died by the time of data cutoff (100 in each study group). The major causes of death in the letrozole and placebo groups were breast cancer (31 and 34 deaths, respectively), other primary cancers (26 and 25), and cardiovascular events (14 and 11). The Kaplan–Meier curves for overall survival are shown in Figure 1B. The rate of 5-year overall survival was 93% (95% CI, 92 to 95) in the letrozole group and 94% (95% CI, 92 to 95) in the placebo group, with a hazard ratio for death of 0.97 (95% CI, 0.73 to 1.28;  $P=0.83$ ). No significant difference in overall survival between letrozole and placebo was found in any of the prespecified subgroups.

The annual incidence rate of contralateral breast cancer was 0.21% (95% CI, 0.10 to 0.32) in the letrozole group and 0.49% (95% CI, 0.32 to 0.67) in the placebo group ( $P=0.007$ ), with a hazard ratio of 0.42 (95% CI, 0.22 to 0.81). The cumulative incidence plot for the time to the development of contralateral breast cancer is shown in Figure 2.

#### SAFETY

The incidence of most toxic effects was similar in the two groups, with the exception of bone-related toxic effects, which were more common in the letrozole group (Table 3). Few women discontinued treatment because of toxic effects (5.4% in the letrozole group vs. 3.7% in the placebo group).

Whereas patients receiving letrozole had a mean loss of bone mineral density in the total hip (mean loss,  $-3.2\%$ ) and an increase of  $1.4\%$  in the lumbar spine at the time that treatment was discontinued, there was an increase in bone mineral density in both the hip and the spine in patients receiving placebo (mean gain in the hip,  $22.4\%$ , and in the spine,  $4.5\%$ ). The between-group difference in the mean change in bone mineral density was significant, favoring placebo ( $P<0.001$ ). A significantly greater number of participants receiving letrozole than those receiving placebo had a T score at the lumbar spine that was less than  $-2.5$  at any time after baseline (10% vs. 7%,  $P=0.03$ ). A similar percentage of patients in the two groups used bone-protecting medications during the trial, including calcium

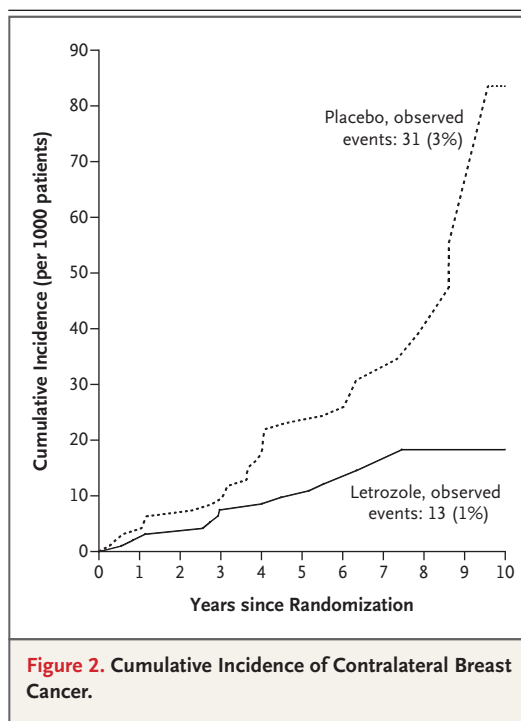
supplements (86.1% in both groups), vitamin D supplements (84.5% in both groups), a selective estrogen-receptor modulator (0.3% in both groups), and bisphosphonates (46.2% in the letrozole group and 46.6% in the placebo group). Among 133 patients receiving letrozole who had a fracture during the trial period, 56% were taking bisphosphonates, 90% were taking a calcium supplement, and 86% were taking a vitamin D supplement; among 88 patients receiving placebo who had a fracture during protocol therapy, 55% were taking bisphosphonates, 86% a calcium supplement, and 88% a vitamin D supplement.

#### QUALITY OF LIFE

In both groups, more than 85% of the participants completed the quality-of-life assessment at each time point. No significant between-group differences were observed in the SF-36 summary scores or in the majority of the subscale scores. Overall, the reduction in scores (indicating worse quality of life) was greater among women in the letrozole group than among those in the placebo group in the role-physical subscale (between-group difference in the change in score, 3.2;  $P=0.009$ ). The interaction between group assignment and time was significant for the bodily pain ( $P=0.03$ ) and the role-emotional ( $P=0.03$ ) subscales, indicating a change in between-group differences over time. Specifically, bodily pain was greater with letrozole than with placebo at 12, 24, and 36 months but lower at months 48 and 60. However, when single time points were compared, the between-group difference was of only borderline significance at 12 months ( $P=0.07$ ). Regarding the role-emotional subscale on emotional functioning, women receiving letrozole had better scores than those receiving placebo at months 12, 36, and 60, but their scores were worse than the scores for those receiving placebo at months 24 and 48. Comparison at single time points showed a significant difference only at 60 months, in favor of letrozole (change in score,  $-3.1$  with letrozole vs.  $-8.6$  with placebo;  $P=0.01$ ). No significant between-group differences were observed on any of the four MENQOL symptom subscales.

#### DISCUSSION

The MA.17R trial explored the effect of extending adjuvant treatment with an aromatase inhibitor



**Figure 2. Cumulative Incidence of Contralateral Breast Cancer.**

tor beyond 5 years in women with early breast cancer. We showed that treatment with an aromatase inhibitor for an additional 5 years after initial treatment for 4.5 to 6 years was beneficial in preventing disease recurrence, independent of nodal status, prior adjuvant chemotherapy, time since the last dose of aromatase inhibitor, and duration of prior therapy with tamoxifen or an aromatase inhibitor. The risk of disease recurrence and contralateral breast cancer was significantly lower (by 34%) among women who continued aromatase inhibitor for 10 years than among women who received placebo after the initial 5 years of aromatase-inhibitor therapy. No overall difference in survival was noted at a median follow-up of 6.3 years. The significant benefit in disease-free survival includes not only a numerically larger reduction in events of local, regional, and distant recurrence but also an apparently greater proportional reduction in events of contralateral breast cancer, which may partly explain the absence thus far of an observed overall survival benefit.

For patients receiving up-front treatment with tamoxifen, the extension of tamoxifen<sup>2,3</sup> or an aromatase inhibitor to 10 years has been shown to be beneficial in reducing the ongoing risk of recurrence.<sup>10,11</sup> However, most postmenopausal

Table 3. Adverse Events.\*

Event	Letrozole (N=959) <i>number (percent)</i>	Placebo (N=954) <i>number (percent)</i>	P Value
<b>Toxic effect during receipt of trial regimen</b>			
Edema	158 (16)	136 (14)	0.19
Hypertension	157 (16)	145 (15)	0.48
Hot flashes	360 (38)	354 (37)	0.84
Fatigue	346 (36)	355 (37)	0.61
Constipation	117 (12)	140 (15)	0.10
Diarrhea	105 (11)	81 (8)	0.07
Arthritis	317 (33)	288 (30)	0.18
Hypercholesterolemia	203 (21)	184 (19)	0.31
Dizziness	145 (15)	139 (15)	0.74
Headache	151 (16)	138 (14)	0.43
Insomnia	269 (28)	243 (25)	0.20
Arthralgia	513 (53)	475 (50)	0.10
Myalgia	268 (28)	240 (25)	0.31
Bone pain	174 (18)	133 (14)	0.01
Dyspnea	148 (15)	165 (17)	0.27
Vaginal dryness	102 (11)	96 (10)	0.68
Elevated alkaline phosphatase level — no./total no. (%)†	111/928 (12)	78/916 (9)	0.01
Elevated aspartate aminotransferase level — no./total no. (%)†	133/928 (14)	131/915 (14)	0.92
Elevated alanine aminotransferase level — no./total no. (%)†	97/909 (11)	128/894 (14)	0.02
Bone fracture‡	133 (14)	88 (9)	0.001
Spine	17 (2)	9 (1)	0.12
Wrist	27 (3)	16 (2)	0.09
Pelvis	1 (<1)	7 (1)	0.08
Hip	7 (1)	6 (1)	0.79
Femur	9 (1)	4 (<1)	0.17
Tibia	5 (1)	4 (<1)	0.74
Ankle	19 (2)	11 (1)	0.14
Other	68 (7)	48 (5)	0.06
New-onset osteoporosis	109 (11)	54 (6)	<0.001
Cardiovascular event	116 (12)	98 (10)	0.21
<b>Toxic effect after discontinuation of trial regimen</b>			
Hot flashes	25 (3)	17 (2)	0.22
Arthralgia	22 (2)	24 (3)	0.75
Hypertension	8 (1)	4 (<1)	0.25
Supraventricular arrhythmia	6 (1)	3 (<1)	0.32
Bone fracture‡	54 (6)	57 (6)	0.75
Spine	13 (1)	9 (1)	0.40
Wrist	4 (<1)	4 (<1)	1
Pelvis	3 (<1)	4 (<1)	0.70
Hip	5 (1)	0	0.07



**Table 3. (Continued.)**

Event	Letrozole (N=959)	Placebo (N=954)	P Value
	number (percent)		
Femur	2 (<1)	7 (1)	0.09
Tibia	3 (<1)	2 (<1)	0.65
Ankle	3 (<1)	6 (1)	0.31
Other	32 (3)	31 (3.2)	0.92
New-onset osteoporosis	20 (2)	11 (1.2)	0.11

\* With the exception of bone toxic effects, for which all adverse events are listed independently of incidence, the data shown refer to adverse events of at least grade 1 for which the incidence in the two groups differed by more than 1% or for which the incidence was at least 10% in either group. Grades were assigned in accordance with the National Cancer Institute Common Toxicity Criteria, version 2.0.

† The denominator for these laboratory abnormalities is for the number of women for whom the laboratory evaluation was performed. These evaluations were required only during protocol therapy.

‡ Each patient may have had more than one fracture.

patients with hormone-receptor–positive early breast cancer now receive 5 years of treatment with an aromatase inhibitor as up-front therapy. For this overwhelming majority of patients with breast cancer, it was previously unclear whether the extension of treatment with an aromatase inhibitor beyond 5 years would be beneficial.

As patients in the placebo group stopped taking the aromatase inhibitor and quickly reverted to normal postmenopausal estrogen levels, they had an improvement in bone health, as would be expected when aromatase-inhibitor therapy is stopped.<sup>12</sup> In addition, a significantly greater percentage of the women taking letrozole than those taking placebo had both new-onset osteoporosis and more clinical fractures — either major osteoporotic fractures (i.e., fragility fractures at the typical osteoporotic sites of the proximal femur [hip], thoracic or lumbar vertebrae [spine], distal forearm [wrist], or proximal humerus [shoulder]) or other fragility fractures (i.e., fragility fractures at any other skeletal site). The increases in bone mineral density that were observed among patients receiving placebo were anticipated. Only a minority of the fractures in both groups were located in the hip, spine, pelvis, or femur, and no significant change in physical health was recorded in either group, perhaps because most of the women in both groups took bone-protecting supplements or medications during the study. Overall, the low incidence of reported toxic effects is probably due to self-selection on the part of study participants who had had few unacceptable side effects through the first 5 years of aromatase-inhibitor therapy and were thus willing to undergo another 5 years

of treatment. It is also reassuring that there were no significant between-group differences in the outcomes related to most measures of quality of life. The significant differences in favor of placebo were observed in only one subscale of the SF-36 — role function related to physical health — but the difference (3.2 points) was less than the minimum clinically important difference (5 points on a 100-point scale).<sup>9</sup>

The validity of the adherence data may be limited because we used a measure that relies on self-report. The rates of adherence observed were at the lower end of the range reported in other studies of early adjuvant endocrine therapy on the basis of longitudinal claims data<sup>13,14</sup> or combinations of prescription records and physician recall.<sup>15</sup>

Our study shows that it is safe and beneficial for postmenopausal patients with hormone-receptor–positive breast cancer to take an aromatase inhibitor as adjuvant therapy for 5 years after initial treatment. Although most postmenopausal patients now receive an aromatase inhibitor as up-front therapy, only 21% of the patients in the MA.17R trial had not been previously treated with tamoxifen. Although the hazard ratios for disease progression and contralateral breast cancer were similar among patients with different durations of prior tamoxifen exposure and no interaction effects between study regimen and duration of prior tamoxifen exposure were observed in our study, it is likely that the benefits of treatment, toxic effects, and quality of life differ among these groups. It is conceivable, for example, that since the baseline hazard of recurrence declines over time, the ab-

solute benefit of extended endocrine therapy is higher in the first few years after diagnosis and declines over time (in the presence of similar hazard ratios, as shown). Consequently, women who are discontinuing treatment after having received an aromatase inhibitor for 5 years without prior treatment with tamoxifen might be the ones who realize the most benefit. Ultimately, the decision of whether a patient should receive prolonged therapy with an aromatase inhibitor will depend largely on the extent of its effect on her in terms of toxic effects and quality of life, the extent to which bone mineral density is maintained, as indicated by sequential scans, and the patient's individual risk of disease recurrence.

Supported by grants from the Canadian Cancer Society Research Institute (021039 and 015469), the National Cancer Institute (CA180888, CA189953, CA180828, CA13612, CA37981, CA077202, CA180863, CA67753, CA189805 [to Dr. Sturtz], CA16116, CA180802 [to Dr. Wolff], CA16116, and CA180802 [to Dr. Robert]), the Canadian Cancer Trials Group (CA077202 and

CA180863), the ECOG-ACRIN Cancer Research Group (CA180820 and CA21115), and Novartis Pharmaceuticals. Dr. Goss was funded in part by the Avon Foundation.

Dr. Pritchard reports receiving fees for serving on advisory boards from AstraZeneca, Pfizer, Roche, Amgen, Novartis, GlaxoSmithKline and Eisai, consulting fees from Pfizer and Novartis, and lecture fees from Novartis; Dr. Muss, serving as an uncompensated consultant and advisor to Pfizer and HarborPath and serving on the board of directors of HarborPath; Dr. Gralow, serving on data safety and monitoring committees for Novartis and Roche-Genentech and on a steering committee for Roche-Genentech; Dr. Whelan, receiving fees for serving on an advisory board from Genomic Health and fees for testing reagents from NanoString; Dr. Winer, receiving grant support through his institution from Novartis; Dr. Hudis, receiving consulting fees and fees for serving on advisory boards from Novartis, Pfizer, and AstraZeneca; and Dr. Stopeck, receiving consulting fees from Amgen, Genentech, and BioMarin and honoraria from Amgen and serving on a data safety and monitoring committee for Pfizer and a steering committee for Sandoz. No other potential conflict of interest relevant to this article was reported.

Disclosure forms provided by the authors are available with the full text of this article at NEJM.org.

We thank Jessica St. Louis for her administrative support in the preparation and submission of an earlier version of this manuscript.

#### APPENDIX

The authors' full names and academic degrees are as follows: Paul E. Goss, M.D., Ph.D., James N. Ingle, M.D., Kathleen I. Pritchard, M.D., Nicholas J. Robert, M.D., Hyman Muss, M.D., Julie Gralow, M.D., Karen Gelmon, M.D., Tim Whelan, B.M., B.Ch., Kathrin Strasser-Weippl, M.D., Sheldon Rubin, M.D., Keren Sturtz, M.D., Antonio C. Wolff, M.D., Eric Winer, M.D., Clifford Hudis, M.D., Alison Stopeck, M.D., J. Thaddeus Beck, M.D., Judith S. Kaur, M.D., Kate Whelan, M.Sc., Dongsheng Tu, Ph.D., and Wendy R. Parulekar, M.D.

The authors' affiliations are as follows: the Massachusetts General Hospital Cancer Center, Avon International Breast Cancer Research Program (P.E.G.), Harvard Medical School (P.E.G., E.W.), and Dana-Farber Cancer Institute (E.W.), Boston; the Department of Oncology, Mayo Clinic, Rochester, MN (J.N.I., J.S.K.); Sunnybrook Odette Cancer Centre, Toronto (K.I.P.), British Columbia Cancer Agency, Vancouver (K.G.), Canadian Cancer Trials Group, Queen's University, Kingston, ON (K.W., D.T., W.R.P.), Department of Oncology, McMaster University, Hamilton, ON (T.W.), and Dalhousie University Faculty of Medicine, Moncton Hospital, Moncton, NB (S.R.) — all in Canada; Virginia Cancer Specialists-US Oncology Network, Fairfax (N.J.R.); University of North Carolina-Lineberger Comprehensive Cancer Center, Chapel Hill (H.M.); University of Washington School of Medicine, Seattle (J.G.); Center of Oncology and Hematology, Wilheminen Hospital, Vienna (K.S.-W.); Colorado Cancer Research Program, Denver (K.S.); Johns Hopkins Kimmel Cancer Center, Baltimore (A.C.W.); Memorial Sloan Kettering Cancer Center, New York (C.H.); University of Arizona, Tucson (A.S.); and Highlands Oncology Group, Fayetteville, AR (J.T.B.).

#### REFERENCES

1. Early Breast Cancer Trialists' Collaborative Group. Tamoxifen for early breast cancer. *Cochrane Database Syst Rev* 2001; 1:CD000486.
2. Gray RG, Rea D, Handling K, et al. aTTom (adjuvant Tamoxifen-To offer more?): randomized trial of 10 versus 5 years of adjuvant tamoxifen among 6,934 women with estrogen receptor-positive (ER+) or ER untested breast cancer — preliminary results. *J Clin Oncol* 2008; 26:Suppl 10s:513. abstract.
3. Davies C, Pan H, Godwin J, et al. Long-term effects of continuing adjuvant tamoxifen to 10 years versus stopping at 5 years after diagnosis of oestrogen receptor-positive breast cancer: ATLAS, a randomised trial. *Lancet* 2013;381:805-16.
4. Strasser-Weippl K, Badovinac-Crnjevic T, Fan L, Goss PE. Extended adjuvant endocrine therapy in hormone-receptor positive breast cancer. *Breast* 2013;22: Suppl 2:S171-5.
5. Tu D. Minimization procedure. In: Chow SC, ed. *Encyclopedia of biopharmaceutical statistics*. 2nd ed. New York: Marcel Dekker, 2003:614-8.
6. Ware JE Jr, Sherbourne CD. The MOS 36-item short-form health survey (SF-36). I. Conceptual framework and item selection. *Med Care* 1992;30:473-83.
7. Hilditch JR, Lewis J, Peter A, et al. A menopause-specific quality of life questionnaire: development and psychometric properties. *Maturitas* 1996;24:161-75.
8. Ware JE Jr, Snow KK, Kosinski M, Gandek B. SF-36 health survey manual and interpretation guide. Boston: The Health Institute, New England Medical Center, 1993.
9. Norman GR, Sloan JA, Wyrich W. Interpretation of changes in health-related quality of life: the remarkable universality of half a standard deviation. *PMedical Care* 2003;41:582-92.
10. Goss PE, Ingle JN, Martino S, et al. A randomized trial of letrozole in postmenopausal women after five years of tamoxifen therapy for early-stage breast cancer. *N Engl J Med* 2003;349:1793-802.
11. Jakesz R, Samonigg H, Greil R, et al. Extended adjuvant treatment with anastrozole: results from the Austrian Breast and Colorectal Cancer Study Group Trial 6a (ABCSG-6a). *Proc Am Soc Clin Oncol* 2005;23:Suppl 16S:527. abstract.
12. Perez EA, Josse RG, Pritchard KI, et al. Effect of letrozole versus placebo on bone mineral density in women with primary breast cancer completing 5 or more years

- of adjuvant tamoxifen: a companion study to NCIC CTG MA.17. *J Clin Oncol* 2006; 24:3629-35.
13. Partridge AH, LaFountain A, Mayer E, Taylor BS, Winer E, Asnis-Alibozek A. Adherence to initial adjuvant anastrozole therapy among women with early-stage breast cancer. *J Clin Oncol* 2008;26:556-62.
14. Partridge AH, Wang PS, Winer EP, Avorn J. Nonadherence to adjuvant tamoxifen therapy in women with primary breast cancer. *J Clin Oncol* 2003;21:602-6.
15. Ziller V, Kalder M, Albert US, et al. Adherence to adjuvant endocrine therapy in postmenopausal women with breast cancer. *Ann Oncol* 2009;20:431-6.

*Copyright © 2016 Massachusetts Medical Society.*